

2017 May - Journal

Sunday, August 28, 2016

1:43 PM

Cliff Camp Journal Sheet

2017 — 1

Names: Who was in your party? Steve Kliewer

Dates: What days were you here? Thursday, May 11-14, 2017

Comments: How was the weather? What animals did you see? Any problems or funny anecdotes?

(Be sure to update others on any needed repairs, supplies, and food when you get home.)

3/4 of trees dead along road near Shaver (Musick creek area). Heavy logging operation to remove.

Extensive snow patches starting near Shaver junction.

Snow across road starting just past spillway. I was stopped 1/4 mile before parking area.

Trail was blocked at 6 points by fallen logs.

Fall creek was roaring across all three areas and had to be forded.

Water system:

The spring dam was overflowing. The reservoir was full of debris.

The pipe had separated at the dam but water was flowing to the tank.

The Tank was overflowing but still empty. A filter just inside the top was plugged with debris.

The pipe to the cabin was separated at two places along the steepest slope.

The brass inlet valve was shut, cracked, and leaking.

The water filter at the cabin had burst and was destroyed by freezing.

The pipe to the shower had been broken off.

Patches of snow in forest near trail. None blocking trail.

Bear paw prints in snow. Melted away by next day.

At the cabin: the waterfall is almost deafening.

The chimney had been shorn off by snow

4 places on the upper logs of the cabin show fresh bear scratches and chewed wood.

Opening Camp:

Made temporary repair of chimney

Repaired water inlet system at cabin

Shower Stall in good order

Outhouse in good order

Planted: 1 Pixie Crunch Apple tree, 1 Gala Apple tree,

1 Heaven-Can-Wait Blackberry bush, 11 Sparkle Supreme Strawberry plants

Water pipe above planting area is 3/4 black poly with two splices. Easy run down crevice to planting area.

Trail to meadow is blocked by 3 logs. The meadow is thoroughly swamped edge to edge and blocked by
Much debris and much overgrown aspen brush.

Dredged spring, cleared plug, adjusted inlet to Tank, cleared screen at tank top.

Cleared two more plugs and reattached pipe twice on steep downslope.

Mortared stones as windbreak around shower water heater. This was old mortar and was very soupy.

May not setup well.

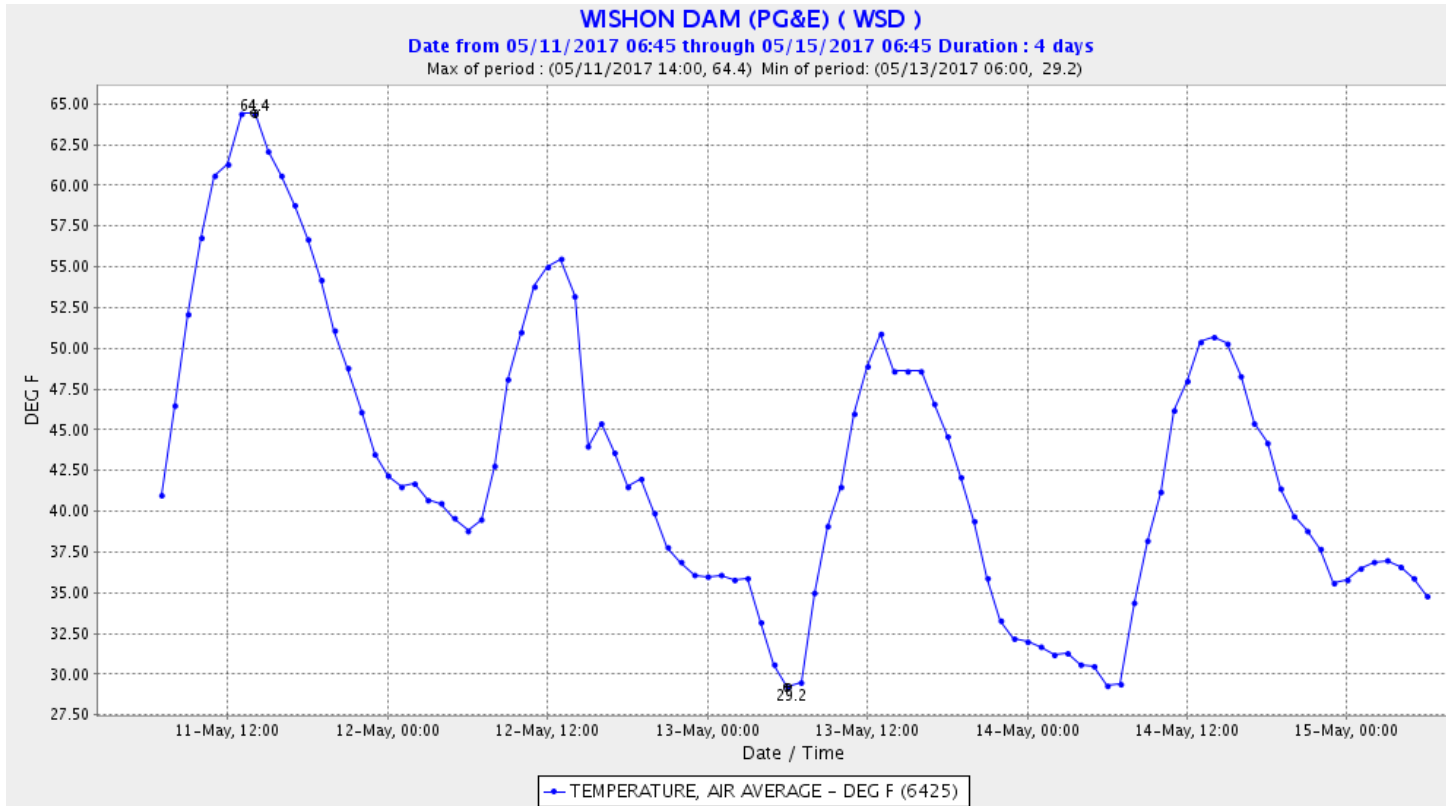
Weather Report:

11 Thursday: partly sunny high of 67 low of 40

12 Friday: thick mist, occasional sun, light rain turning to sleet overnight, high of 43, low of 29

13 Saturday: Sunny, blue sky, high of 57, low of 29

14 Sunday: Sunny, blue sky, high of 50



2017 June - Journal

Sunday, August 28, 2016

1:43 PM

Cliff Camp Journal Sheet 2017 — 2

Names: Who was in your party? Steve Kliewer, Steve Derks, Chris & Jack O'Brien, Zack, Miles & Sharon Grant

Dates: What days were you here? Thursday, June 8-19, 2017

Comments: How was the weather? What animals did you see? Any problems or funny anecdotes? (Be sure to update others on any needed repairs, supplies, and food when you get home.)

The day we arrived was beautiful but a little cool. We cleared the trail of 6 logs and much debris that had fallen this winter.

Several trips in and out were required by the team to get materials for all of the projects at the cabin. The next couple of days got foggy, cold (29) and finally snowed. After that the days grew increasingly warm to a high of 80 and overnight low of 58.

Several new projects have been completed:

- The water tank has a new guage to check its contents.
- The trail has been cleared of many logs and much debris.
- The shower steps and firebox have been updated, a water meter has been added for reference.
- A Garden has been planted with two apple trees, 8 strawberry plants, and a blackberry bush.
- A drip irrigation system was added.
- A solar power system was added for powering medical needs as well as lights and USB. It is easily capable of being expanded if needed.
- A new rack for the ice chest can keep food from swimming in melt water.
- An aluminum replacement shelf next to the stove will not melt.

Fall creek at our trail crossing was still very high. After clearing some debris, we were able to lower the water level enough that one could carefully hop rock to rock without getting too wet even though they were still under water.

At the cabin, the water fall is especially spectacular and provides a loud but pleasant background roar.

The meadow is starting to fill in with lush skunk cabbage and grass. The aspen is making the trail nearly impassable.

Besides that, almost all of the meadow is a swamp of standing water and deep mud. An alternate route north was explored and a log crossing of fall creek found for a route along the cliffs. The meadow is currently impassable making the old cabin, pond, lava mountain, and river inaccessible. If this continues into July, then I strongly suggest blazing and clearing this alternate route as a permanent trail.

Wishon reservoir was rapidly filling during this trip. On June 8 it was still well below the spillway. By June 16 it was filling the spillway channel and one gate was open, making a spectacular fall from the end of the spillway down to the Gorge.

At its highest the lake water level was merely 2 feet below its highest historic level.

Weather Report:

08 Thursday: partly sunny high of 67 low of 40

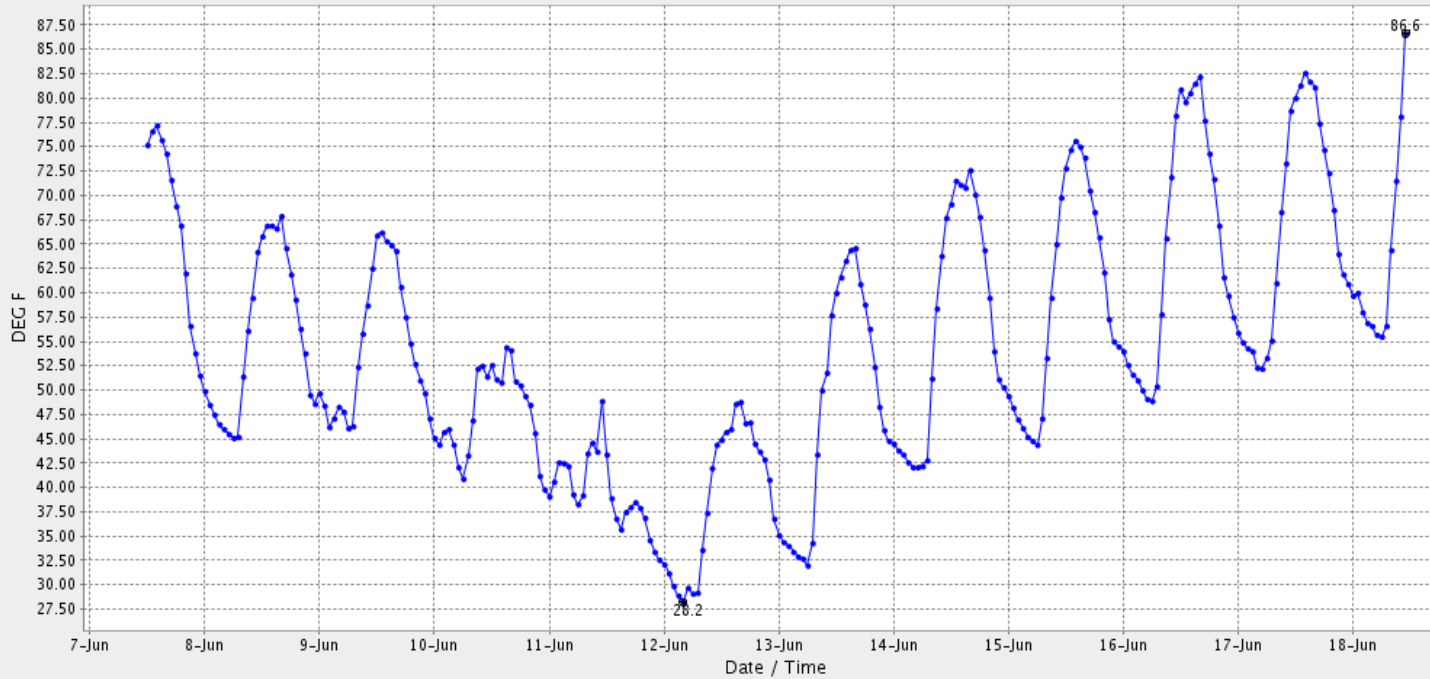
09 Friday: partly cloudy, high of

10 Saturday:

June	Day	Desc	High	Low	Notes
8	Thur	Partly Sunny	67	40	
9	Fri	Partly Cloudy	70	42	
10	Sat	Foggy	56	39	
11	Sun	Foggy	40	29	Light rain/snow/hale
12	Mon	overcast	55	40	
13	Tues	Sunny, blue sky	64	43	
14	Wed	Sunny, blue sky	74	50	
15	Thur	Sunny, blue sky	78	50	
16	Fri	Sunny, blue sky	80	53	
17	Sat	Sunny, blue sky	80	58	
18	Sun	Sunny, blue sky			

WISHON DAM (PG&E) (WSD)

Date from 06/07/2017 11:09 through 06/18/2017 11:09 Duration : 11 days
Max of period : (06/18/2017 11:00, 86.6) Min of period: (06/12/2017 04:00, 28.2)



— TEMPERATURE, AIR AVERAGE - DEG F (6425)

2017 Sept - Journal

Sunday, August 28, 2016

1:43 PM

Cliff Camp Journal Sheet

2017 — 3

Names: Who was in your party? Steve Kliewer, et.al.

Dates: What days were you here? Thursday, Sept 21-25, 2017

Comments: How was the weather? What animals did you see? Any problems or funny anecdotes? (Be sure to update others on any needed repairs, supplies, and food when you get home.)

Light Flurries of Snow/Hail/Sleet on drive and hike in. Clearing but cold all day. Below freezing overnight. Slowly warming through Sunday.

Two of the three streams were still running. I cleared a new overflow channel so that the stepping stones will not be underwater next spring. Our spring is still running full and the tank is overflowing.

I was welcomed to the cabin with 3 large piles of firewood. This was a cheering sight.

Several families of mice had made their nests in the eastern cabinets. About 2 bushels of food were gnawed into or peed on and had to be destroyed. Apparently the large volume of food (oatmeal, nuts, pancake mix, marshmallows, granola bars, and graham crackers) kept the doors open just slightly. A half inch gap is like a thoroughfare for mice. They had a grand old time and were very resistant to my effort to evict them.

The cabin is readily accessible to mice. Any food or bedding left out will be destroyed by mice. The cabinets and drawers (if closed securely) have been safe so far. The shed seems to be safe also. The wooden chest in the cabin and the aluminum chest in the shed were originally brought up to secure bedding. However, the sheer volume of bedding now at Cliff Camp precludes that. I don't use and don't lay claim to any of the contents of either chest. The sleeping bags and blankets stored in them smells and often has mouse urine stains. I have a single plastic box (hanging, labeled Kliewer) of bedding and have two double-wide mattresses (white and labeled Kliewer). All other bedding should be reviewed and if none of the Collins want it we should dispose of it.

Each time I go up I complete an inventory of all foodstuffs (and other materials) in order to avoid bringing up more food than can be reasonably consumed. It is nice to have some common regularly used foods (e.g. flour, sugar, rice, oil, spices, condiments). However, excess food and bedding are both difficult to protect and are providing encouragement for mice and other larger animals.

A young man with the Fresno County Sheriff's Office Search and Rescue team hung out on the rocks just north of the cabin testing to see if spotter planes could find him. Finally a quad copter flew over and located him. We had a great discussion while he waited for more than 4 hours during this test to be spotted.

Wishon reservoir water level was still high: 6500 ft, 95,000 af, 39 ft below spillway.

Weather Report:

Sept	Day	Desc	High	Low	Notes
21	Thur	Rain/Snow	48	29	Flurries of snow/hail 0.7 inches of rain
22	Fri	Partly Cloudy	53	33	
23	Sat	Clear	54	36	
24	Sun	Clear	60	40	
25	Mon	Clear	66	NA	

